



# MONTHLY MEMBERSHIP PROGRESS REPORT

District 201W2

Results as of: 10/31/2014

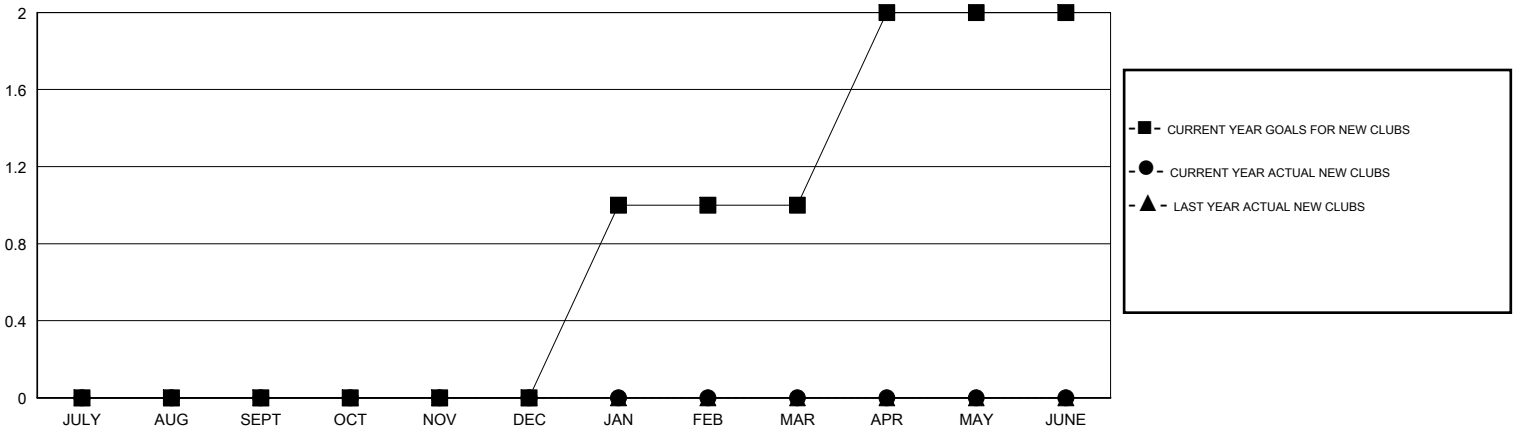
GMT: John Muller

LOCATION AUSTRALIA

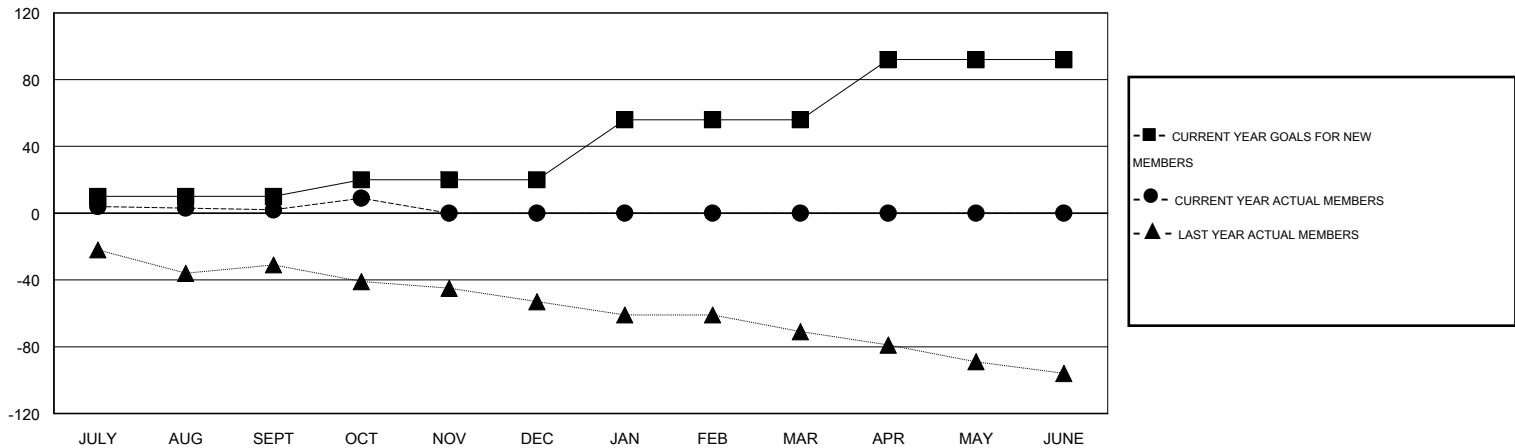
GMT CA 7

Clubs					Members				
RESULTS FOR 2014-2015					RESULTS FOR 2014-2015				
QUARTER	NEW CLUB GOAL	NEW CLUBS	DROPPED CLUBS	NET GAIN/LOSS	QUARTER	NEW MEMBER GOAL	CHARTER AND NEW MEMBERS ADDED	DROPPED MEMBERS	NET GAIN/LOSS
JULY/AUG/SEPT	0	0	0	0	JULY/AUG/SEPT	10	36	34	2
OCT/NOV/DEC	0	0	0	0	OCT/NOV/DEC	10	20	13	7
JAN/FEB/MAR	1	0	0	0	JAN/FEB/MAR	36	0	0	0
APR/MAY/JUNE	1	0	0	0	APR/MAY/JUNE	36	0	0	0

GOALS AND ACTUAL NEW CLUBS CUMULATIVE



GOALS AND ACTUAL MEMBERS CUMULATIVE



DROPPED CLUBS: 0	28 CLUBS OF 69 ADDED 1 OR MORE NEW MEMBERS	<b>GENDER DISTRIBUTION</b>
		MALE 1,056 (69.80%)
		FEMALE 457 (30.20%)
<b>DROPPED MEMBERS</b>	<a href="#">CLICK HERE FOR HEALTH ASSESSMENT DATA</a>	<b>FAMILY UNIT MEMBERS</b> 288
DECEASED 7		HEAD OF HOUSEHOLD 143
CLUB CANCELLED 0		NON-HEAD OF HOUSEHOLD 145
OTHER 40		
<b>TOTAL 47</b>		